

4 NEW COLORS LAUNCHING 2021

Parasol™ is a commercial grade knitted shade cloth for tension structures and other heavy duty applications.

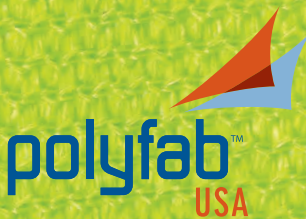
Parasol™

LIME | GRAPE | ORANGE | ROYAL BLUE

PROTECTING PEOPLE JUST LIKE YOU.

10 YEAR WARRANTY

COMMERCIAL GRADE SHADECLOTH



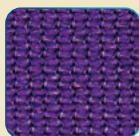
www.PolyfabUSA.com

Parasol™

4 NEW DESIGNER COLORS LAUNCHING IN 2021.



LIME



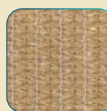
GRAPE



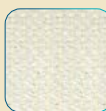
ORANGE



ROYAL BLUE



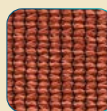
BEACH SAND



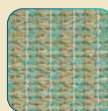
IVORY



RED



TERRACOTTA



HARVEST



FOREST GREEN



YELLOW



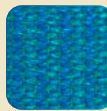
SKY BLUE



OCEAN BLUE



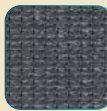
NAVY



TURQUOISE



STEEL GREY



GUNMETAL



CHARCOAL



CARBON BLACK

Parasol™ is designed for Australian conditions and made to stringent quality and manufacturing specifications.

Parasol™ is a commercial grade knitted shadecloth suitable for tension structures and other heavy duty applications. It is manufactured using a combination of high density monofilament and tape which offers a higher degree of protection from UV radiation, known to cause sunburn and skin cancers.

For ease of fabrication and improved performance, Parasol™ shadecloth has been 'heat set' before rolling, to improve lay flat characteristics and dimensional stability.

✓ UV STABILIZED

✓ HEAT SET

✓ ABRASION RESISTANT

✓ UP TO 95% UVR BLOCK

✓ HIGH STRENGTH

✓ 10 YEAR WARRANTY

PRODUCT DISCLAIMERS:

The above information represents the results sourced from third party testing authorities, and tolerances may vary by as much as 10%.

The Manufacturer reserves the right to alter or modify product specifications and colors without notice, and assumes no obligation or liability for the suitability and use of its products other than those applications intended by the manufacturer.

Colors shown may not be an exact representation of the actual product.

Outdoor fabrics are subject to harsh conditions and degradation over time is to be expected. Parasol™ is supported with a 10 year limited UV warranty. During this period the fabric will remain serviceable and fit for purpose.

Color fading is normal over time. Colors containing red and yellow pigments have a tendency to fade more than others. This is not a loss of strength caused by UV breakdown and is not covered by the product warranty. For more details refer to the supporting Polyfab product warranty.

Polyfab USA assumes no liability in the event of negligent installation / fabrication or application or choice of cloth.

During installation, Polyfab shadecloth should not be subject to "pre-stressed" loading in excess of 20%.

TECHNICAL SPECIFICATIONS

		WARP	WEFT
BREAKING FORCE (PER ASTM D 5034)	LBS	231	419
ELONGATION AT BREAK (PER ASTM D 5034)	%	104	69
TEARING STRENGTH (PER ASTM D 751-06)	LBF	39	49
MULLEN BURST (PER ASTM D 751-06)	PSI	FACE	500+*

*NO BREAK RECORDED; RESULT EXCEEDED INSTRUMENT'S CAPACITY

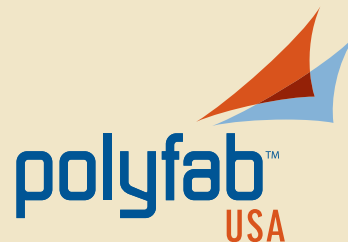
COLORS	COVER FACTOR %*	UVR BLOCK %	MEAN UPF	SHADE FACTOR %
LIME	TBD	TBD	TBD	TBD
GRAPE	TBD	TBD	TBD	TBD
ORANGE	TBD	TBD	TBD	TBD
ROYAL BLUE	TBD	TBD	TBD	TBD
BEACH SAND	91.5	91.0	11.8	80.2
IVORY	93.0	91.5	14.1	70.4
RED	91.8	92.1	15.7	81.6
TERRACOTTA	91.6	92.2	14.1	86.5
HARVEST	93.1	92.7	14.5	84.5
FOREST GREEN	93.5	93.2	15.5	92.5
YELLOW	92.4	92.3	13.3	74.1
SKY BLUE	93.9	93.6	17.1	91.0
OCEAN BLUE	94.5	93.2	16.2	87.4
NAVY	95.2	93.8	18.8	90.9
TURQUOISE	88.9	87.1	8.6	78.4
STEEL GREY	93.3	92.7	14.9	85.1
GUNMETAL	95.3	95.1	21.6	93.5
CHARCOAL	94.9	94.8	19.4	94.7
CARBON BLACK	94.8	94.7	18.9	95.4

*PERCENTAGE OF UVR BLOCK

NOMINAL WEIGHT: 9.6 oz. per square yard / 325 gsm +/- 10%

AVAILABLE IN: 9.8 feet/3.0 meters (width) x 55 yards / 50 meters (length) center folded rolls.*

*Unfolded (straight) rolls are available upon request and would be subject to minimum ordering quantities.



www.PolyfabUSA.com